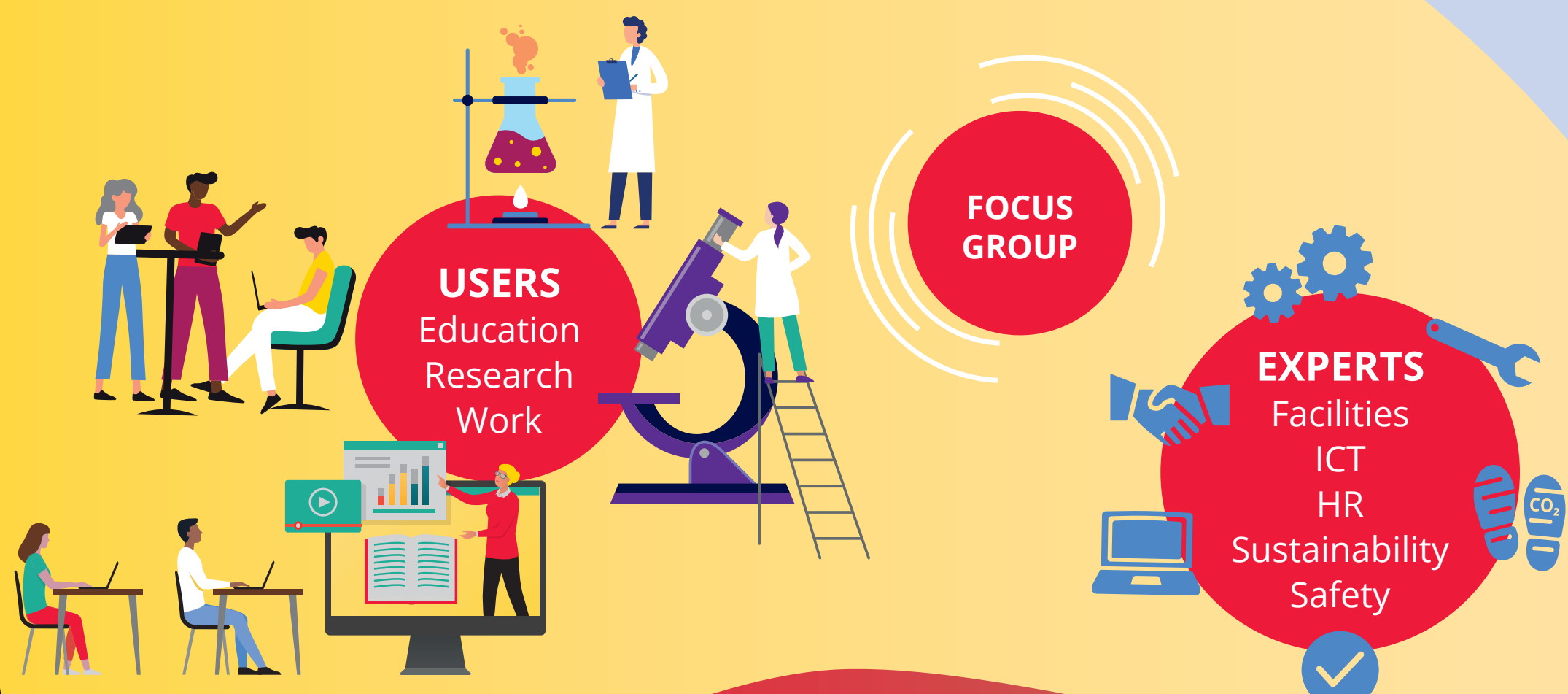


Collect input



The world of research, education and work is evolving. Digitalisation, sustainability and multidisciplinary research are themes of increasing importance. Meanwhile, as a faculty we are outgrowing our premises and our buildings facilitate less and less our research and education, and the way we want to do our work. That is why we are working on 'the campus of the future'.

- Interviews
- Survey
- Online sessions
- Building analysis



October

Collected needs and requirements

Choices regarding housing possibilities, within agreed frameworks

End of 2021

Mid-2022

IHP
Integral
Housing
Plan



Together with Real Estate & Campus Housing projects
In line with expectations and developments

