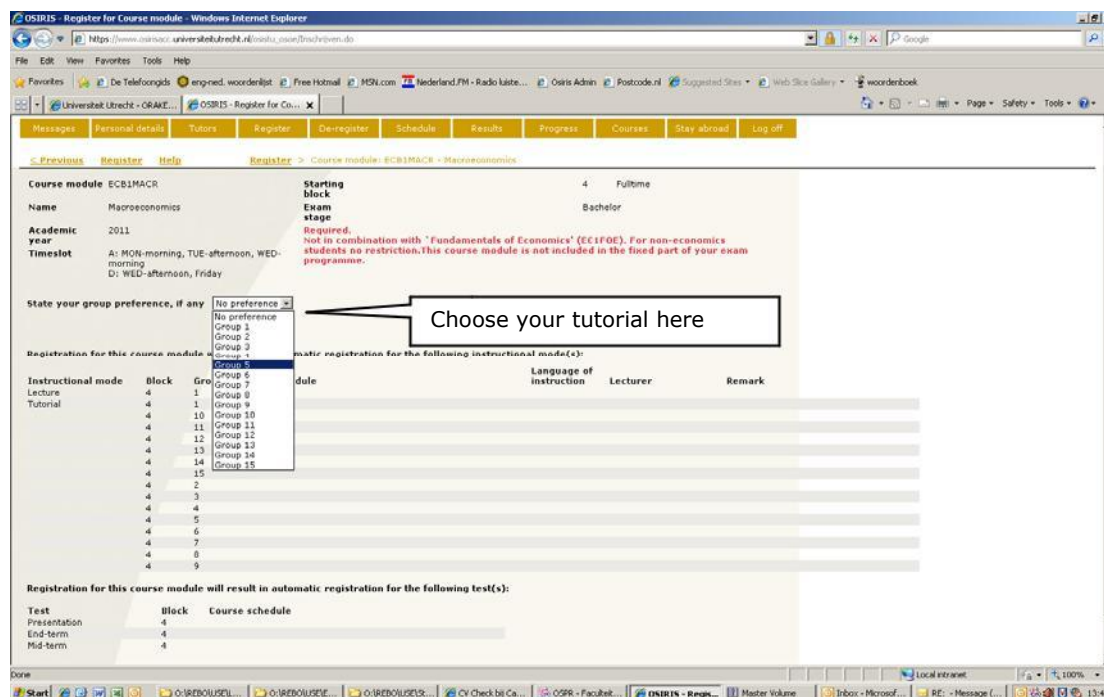


Go to: www.uu.nl/osirisstudent

Log in and go to "Register"

Note: Always register for a course based on the course code and **never** use the option "Select the component which you want to register for".



Choose the number of the tutorial you want to follow (see print screen), but keep these rules in mind:

- 1) Check the definition of the tutorial (Dutch, English, Repeater or free mover). See language of instruction and Remarks. Choose a tutorial with the right definition i.e. one that is suitable for your situation. If you choose a wrong tutorial, the student desk will remove you from the tutorial you chose and place you in a tutorial with the right definition.
Example 1: You are following the Dutch bachelor, but you registered for an English tutorial. You will be placed in a Dutch Tutorial.
Example 2: You are a repeater, but register for an English tutorial. You will be placed in the repeater tutorial.
- 2) Do not choose more than one course in the same time slot

Click on "register", make sure you have received a confirmation e-mail in your students' mail and save this. It is proof of your course registration.

If you have any problems during the registration, please contact the [Student Information Desk](#) as soon as possible.